

Victoria Avenue

Published by Victoria Avenue Forever

Volume 21 • No. 1 • January 2013

The Helen Hays Yeager Memorial Grove



By Jeff Smith
Field Operations Manager
City of Riverside

Helen Hays was a resident in the City of Riverside for over 50 years. She lived at the corner of Victoria and Rumsey. It was her dream that the heritage of the orange grove she cared for would be open to the community. Her husband and sons decided to donate the orange grove she loved to the City of Riverside for its residents.

On January 11, 2011, the City Council accepted the Hays Memorial Grove as an addition to the City of Riverside by adding this grove to the heritage of historic Victoria Avenue.

The Hays Memorial Grove is a 0.76 acre orange grove, and is a feature and key entry point to Victoria Avenue. William R. Hays and Thomas T. Hays also donated the funds necessary to complete improvements to the Memorial Grove including a plaque in memory of Helen Hays Yeager to make this a place for others to enjoy.

With these donated funds, the City of Riverside Public Works department along with the Hays family created a build design for the grove to keep it in its original condition and open the grove for public viewing. The Hays Memorial Grove consists of more than 150 orange trees, our famous Ragged Robin roses at its entrance, a bench on which to rest, and a kiosk that will be filled with information about orange groves and the history of Victoria Avenue. Additionally, this area is the site of the famous Roosevelt Palm which was planted by President Roosevelt himself in 1903. (See story on page 2.)

Victoria Avenue is a linear drive that begins at Myrtle Avenue and ends at La Sierra. Victoria Avenue was master planned in 1892 by Riverside's pioneer landscape designer Frank Hosp. The Avenue has blossomed into a year-round attraction for bicyclists, joggers and Sunday afternoon drive enthusiasts. In 1902, Victoria Avenue was deeded to the City of Riverside with the condition that the trees be maintained and protected. In 1969, Victoria Avenue was declared a Cultural Heritage Landmark and then added to the National Park Service's National Register of Historic Places in October of 2000.

Today, Victoria Avenue has over 6,000 trees, over 1,000 orange trees, 10,000 Ragged Robin Roses, 9 miles of walking trails and various shrubs and ground plantings along its length.

Today orange trees in California are in danger. There is a new pest in California called the Asian Citrus Psyllid. This pest, if not controlled, could cause major devastation to our heritage and this wonderful grove. The City of Riverside is working with the State of California, the County of Riverside and our local orange growers to deal with this pest. If you would like more information about our orange groves and this pest, please check out this website for more information <http://www.cdfa.ca.gov/plant/acp/>

The Hays Memorial Grove adds to the beauty of Victoria Avenue and helps to preserve the history of orange groves in our community. The grove is open to the public Monday through Friday from 10:00 to 2:00 and on weekends from 8:00 to 3:00. Come and visit when you can!



President's Corner by Frank Heyming

What's Happening on the Avenue?

The *Ceiba speciosa* (formerly known as *Chorisia*) at the corner of Victoria and Van Buren are in bloom. These trees are also known as silk floss trees because of their fruit consisting of large 8 inch long pods which contain black seeds surrounded by fluffy cottony or silky matter. The cottony matter functions in wind dispersal of the seeds. The flowers are 4 to 6 inches in diameter with white centers and pink toward the tips of the petals. The trunk is bottle shaped covered with thick conical spikes which store water for dry times.



- Tree trimming of *Eucalyptus* is in progress.
- Helen Hayes Yeager Memorial Grove at the corner of Myrtle and Victoria is completed (see article on page 1). Victoria Avenue Forever is putting together copy for the kiosk.
- Washington Park expansion at Mary and Victoria is still under negotiation.
- Historic Victoria Avenue signs are being planned for major side streets leading to Victoria Avenue and the monument signs in the median at La Sierra and at Van Buren will be replaced.
- Annual Tree Planting – we are busy compiling a list of dead or missing trees to be replanted at our January 19, 2013 workday (see work day information).
- We are monitoring the Overlook Parkway Environmental Impact Report progress.
- We hope everyone had a happy holiday season!

2012 - 2013 Officers

Frank Heyming, President
Darleen DeMason, Vice President

Jim Dudek, Treasurer
Susan McClintock
Recording Secretary

Directors

Kurt Gunther
Marilyn Harris
Jim Montgomery
Kathy Swanson
Adam Timura
Pati Weir
Tom Wilson
Lori Yates
Frank Yost
Lynn Yost

Special Projects

Publications:

Kurt Gunther • Lori Yates
Marsha Loveridge
Darleen DeMason

Victoria Avenews is published
4 - 6 times a year
by Victoria Avenue Forever

The VAF board meets at 6:30 on
the 2nd Wednesday of each month
(except August).
email address:

info@victoriaavenue.org

website: www.victoriaavenue.org

Mailing address:

PO Box 4152, Riverside, CA 92514
or call (951) 398-1032

Letter from the Editor

by Darleen DeMason

Happy New Year to everyone! Many exciting activities are happening on Victoria Avenue in this New Year – 2013. Victoria Avenue has a new “park” known as the Helen Hays Yeager Memorial Grove and a summary of that is on page 1. The Roosevelt Palm (Riverside City Cultural Landmark #64) is now a part of this site and its plaque was remounted. Some background on this historic palm is below. The final project planned by Victoria Avenue Historic Restoration Project, undergrounding the utility lines between Maude and Washington will occur this year. A history of this volunteer organization and the background for this project is on page 3. In Southern California where spring comes early, it is time to plan renewal for the coming growing season. In this issue we have some practical advice on fertilizing Citrus from VAF Board Member, Tom Wilson who is also a Citrus grower. Our President, Frank Heyming has provided a list of current activities on and involving Victoria Avenue above. Finally, make sure you put our two work days on your calendar (January 19th for tree planting and February 16th for rose planting in the Small garden) and join the activities.

History of the Roosevelt Palm

This Mexican Fan Palm (*Washingtonia robusta*) was relocated from the Mission Inn to its present location at the corner of Victoria Avenue and Myrtle Street. In 1903, President Theodore Roosevelt dedicated the palm to the beloved British Queen Victoria and it is also known as “Victoria Palm”. The tree has been designated as Riverside City Cultural Landmark #64. The plaque has been remounted in the new Helen Hays Yeager Memorial Grove.



Beauty Runs Deep or Dr. Dan Hays and the history of the Victoria Avenue Historic Restoration Project

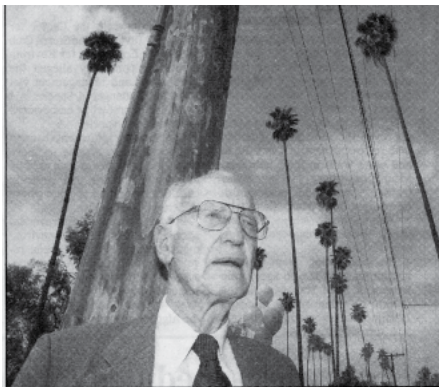
by Darleen DeMason

As we anticipate the last segment of overhead wire undergrounding on Victoria Avenue between Maude and Washington Streets, which will start imminently, it seems appropriate to review the history of this project and acknowledge the people who made it happen.

In 1924, 5-year-old future pediatric surgeon Dan Hays moved with his family to Riverside. He remembered the Eucalyptus, Pepper Tree and rose bush-lined Victoria Avenue as a child. He remembered that his father was so proud of the Avenue that he always took visitors for rides down it in his convertible. But when Dr. Hays retired and returned to Riverside, he found that time had not been kind to his beloved Victoria Avenue. He saw utility wires that marred the skyline and water-stressed and dying trees. Victoria Avenue had already been designated Riverside Cultural Heritage Landmark #8 by the Cultural Heritage Board and had the attention of our volunteer group, Victoria Avenue Forever (VAF). The City of Riverside had already buried utility wires between Monroe and Harrison during a street-widening project in 1994, but in those challenging economic times, there were no additional reserves to continue the effort.

Dr. Hays started his quest to restore Victoria Avenue to its former elegance as a classic Victorian landscape by personally approaching influential citizens and groups for support of an effort to underground the utility wires. He had already started the application process to have the National Park Service add Victoria Avenue to its National Register of Historic Places. Dr. Hays knew that this designation would help leverage state and national funding for the project. The request included the 8 mile stretch between Myrtle and Boundary. This process had multiple steps and included approvals by the Cultural Heritage Board, the City Council, the State Historic Resources Commission in Sacramento and finally to the National Park Service in Washington D.C. It took three years (and \$7000) to come to fruition in October 2000 when the Arlington to Boundary segment was accepted in the Register.

In 1998, a volunteer group called Victoria Avenue



Picture of Dr. Dan Hays at Myrtle to Central groundbreaking ceremony from the Press Enterprise, March 22, 2001

Without Wires was formed and its advisors were Dan Hays (chair), Gerry Marr, Tony Culver, Rosie Francisco, Henry Coil, Jack Yeager and Craig Blunden. Fund raising efforts were commenced and the first trifold brochure was developed by Tony



Presentation of VAHRP's final check to Public Utilities, September 2012. People in photo are (left to right) Bill DeWolfe, Gerry Marr, Mayor Ron Loveridge, Dr. Esther Hays and Jonathan Hays.

Culver. In 1999, the first phase project had been planned and approved: utility undergrounding between Myrtle to Central (Poly High School). The effort obtained support from many community groups, such as Victoria Avenue Forever, the Greater Riverside Chambers of Commerce, Keep Riverside Clean and Beautiful, the Riverside Land Conservancy and the Riverside Bicycle Club. I remember the VAF Board meeting, with Marie Hemy presiding as President, during which Dr. Hays came to request support. From then and continuing for many years, both Dan Hays and Gerry Marr came to all our Board meetings to report on their progress.

By the end of 1999, fundraising for the first two years had accumulated \$525,000 and these funds were put in an interest bearing account with the Community Foundation of Riverside County. At that time, Don Curtis was invited to become the group's financial advisor. Major donations had come from the Bank of America, Belo Foundation (the Press Enterprise), and from Henry Coil and Bill Johnson, and the Yeager and Hays families, as well as, from many citizens in the Riverside community and elsewhere across the U.S. and from as far away as Singapore and New Zealand. In 2000, the name of the organization was changed to Victoria Avenue Historic Restoration Project (VAHRP) and Tony Culver and Gerry Marr revised the trifold brochure to reflect the new name and goals.

In the year 2001 there was a flurry of activity. Ground-breaking at the Myrtle to Central undergrounding project took place on March 21st with a public celebration. This project was estimated to cost \$300,000 and was covered 1/3 by VAHRP, 1/3 by Riverside Public Utilities and 1/3 by users (utility and cable companies). It was completed that summer. VAHRP had raised \$690,000 in funding. The second and third phase projects were planned. The second phase was undergrounding between Adams and Monroe and the third phase was replacing trees, and repair-

continued on page 4



ing irrigations lines from Monroe to Harrison, which included the blocks that had been previously undergrounded by the City in 1994. A federal transportation-enhancement program grant (TEA 21) provided \$486,000 for tree replacement and irrigation repairs. Another grant from the California Heritage Fund provided \$275,000 for restoration near Jefferson Street. A commitment from the California Conservation Corps, Inland Empire District was obtained to provide the labor for tree removal and planting.

Undergrounding between Adams and Monroe Streets was completed in 2004 with VAHRP assistance; in 2009 between St. Lawrence and Adams by Riverside Public Utilities; and in 2009 between St. Lawrence and Jefferson with VAHRP and California Heritage Fund support. These projects included planting of 135 trees (*Eucalyptus*, *Jacaranda*, peppers and *Magnolia*) along the sides of the Avenue and repairs to irrigation systems.

The last phase of the project which consists of undergrounding the utilities between Maude and Washington has been dragging along for several years. Bill DeWolf was instrumental in negotiating with the Community Foundation and with Riverside Public Utilities to get this phase started again. This project received funding from multiple sources, including 50% from VAHRP, 16% from Caltrans and the remaining 34% from the City of Riverside. The total estimated cost is \$2,200,000. Work was scheduled to begin this past fall, pending final environmental approval by Caltrans. On September 8th, 2012 VAHRP presented a final check for \$1,322,801 to Riverside Public Utilities for the final segment of the project to underground utilities between Maude and Washington. The signs are up and we are all waiting for the work to start.

There are two remaining sections of Victoria Avenue that still have overhead utilities: Jefferson to Washington and Maude to Central with estimated costs of \$2,500,000 and \$3,750,000 respectively. There are no plans at the current time to continue the work. It is somewhat a shame that Dr. Hays will not see his dream of “restoration and preservations of Victoria Avenue from end to end” within his lifetime. On the other hand the results of his tremendous efforts, and those of all of his supporters, are major accomplishments that have enriched our community and will continue to do so for many years to come. Thanks goes to everyone who helped this happen.



Sign at the corner of Maude and Victoria Avenue announcing the final phase of the undergrounding



Contributions to Victoria Avenue Forever July 2012 - October 2012

Endowment Fund Contributions

Thank you to all who contributed to Victoria Avenue in memory of, or in honor of, your loved ones. Your gifts will be used to help protect and care for Riverside’s living legacy – Victoria Avenue. We want to make sure to acknowledge every one. If your gift is not acknowledged in this issue of the *Avenews*, it will be in the next one.

Recently the late **Gail Ferman** was acknowledged with an outpouring of memorial gifts to Victoria Avenue from Mary Bean, Howard Hall, Thomas Hastings (and Bonnie Selway, Rachel and Jessie), Anne Jeffries, Anne Johnston, Elizabeth Neblett, Bryan Pepper, and Margaret Scott.

More contributors in memory of **Art Miller** are: Mary Bean, Howard and Joan Hall, Anne Jefferis, Anne Johnston, Elizabeth Neblett, Lalla Neblett, Bryan and Sue Pepper, and Margaret Scott.

- | | |
|---|---------------------------------------|
| Hunt Barnett | In memory of Richard and Mary Wadding |
| Richard Borton | In memory of Richard Stadelbacher |
| Gerald Edwards | In memory of Richard Stadelbacher |
| Christa Fieder | In memory of David Rines |
| Josephine Guzzetta | In memory of Darrell Lee Murphy |
| Howard Hall | In memory of Lois Jackie Solem |
| Robert Hamilton | In memory of David Rines |
| Marion Hammerlund | In memory of Eugene (Andy) Anderson |
| Robert Kimmel | In memory of Richard Stadelbacher |
| Carla Lehn | In memory of Richard Stadelbacher |
| Patricia Miller (Los Amigos Home Owner Association) | In memory of Craig Cadwalader |
| Roger Ransom | In memory of Richard Stadelbacher |
| David Roger | In memory of Martina Hernandez |
| Marion Russell | In memory of Florence Lorenz |
| Bobby, Ken and Dee Scher | In memory of Richard and Mary Wadding |
| Jane Wallace | In memory of Ron Preston |
| George Weiner | In memory of Martha Lock |

Commemorative Tree Plantings

- | | |
|---------------------------|---|
| Tom and Charlotte Johnson | In memory of Richard Stadelbacher |
| The Riverside Bridge Club | In memory of Don King |
| The Rosanna Scott family | In memory of victims of drunk driving and violent crimes |

Practical Advice on Fertilizing Citrus

by Tom Wilson, VAF Board member

In this article, I hope to provide some practical answers to a question I'm frequently asked as an orange grower – "What is the best way to fertilize orange trees?" Before I discuss fertilizing, I want to note that if a tree is not doing well, it is more likely that the problem is overwatering and not lack of fertilizer. To maintain a healthy root system, a tree must dry out between irrigations. Drying out also helps keep the *Phytophthora* root rot in check. It is not uncommon for growers to wait two weeks, or longer, between irrigations. So, if your tree is yellowing and appears unhealthy, always consider your irrigation regime first.

Fertilizing orange trees is complex, but problems can usually be reduced to a lack of nitrogen (N) and/or the micro nutrients zinc (Zn) and manganese (Mn). N deficiency causes trees to yellow and have stunted growth. Commercial growers pay particular attention to N because of its effects on yield. Zn deficiency or 'mottle leaf' is identified by a characteristic yellow blotching of the area between the veins of the leaves. Mn deficiency causes the color in the area between the veins to pale, but not as pronounced as Zn deficiency. Zn and Mn deficiency often occur together and the Mn symptoms will be overshadowed by that of Zn. Deficiencies in these nutrients also reduce tree vigor and yield.

N is easy to add. I recommend applying one pound of calcium nitrate (CaNO_2) (15.5-0-0)(see fertilizer box) and shaking it under the tree where the irrigation water will soak it into the soil. Do this three or four times a year starting in late February or March and ending in August. It is a good idea to avoid fertilizing in the fall because this can lead to a flush of new growth in the winter which is vulnerable to frost.

CaNO_2 is expensive but, in my opinion, it is by far the best fertilizer for *Citrus*. Ca has positive effects on soil structure and water penetration. When fertilizing, you should consider salt effects on your soil. Long term studies show that CaNO_2 helps prevent harmful build-up of salts in the root zone and increases tree yield.

If you choose a different type of fertilizer, be aware that it is easy to over fertilize, and excess N can negatively affect fruit quality. An over fertilized tree may look vigorous with beautiful dark green foliage but produces a coarse, poor tasting, inferior orange.

Urea (46-0-0)(see fertilizer box) is about the cheapest form of N, but keep in mind that one pound of urea has about three times as much N as one pound of CaNO_2 (15.5-0-0).

Zn and Mn deficiencies must be treated by foliar sprays. Spraying is an effective way to apply fertilizer -- the trees show a quick response and you will not lose fertilizer to leaching or runoff. But, you must make sure the material can be safely applied to the foliage, and it is never a good idea to spray when it is hot or if the tree is stressed for water. A helpful UC Extension Service Bulletin recommends the following proportions:

- 1 pound zinc sulfate (ZnSO_4) (36.4 % metallic Zn)
- 1 pound manganese sulfate (MnSO_4) (28 % metallic Mn)
- 100 gallons water.

The plant will take in more Mn if you add 7 1/2 pounds of low-biuret urea. The low-biuret urea will also help meet the tree's N requirements. If the urea is not low-biuret, it will burn the foliage. Full coverage (soaking the tree) is not necessary. The UCR Extension flier recommends 8 to 10 gallons for a mature tree. The tree will get maximum benefit if "the spray is applied to young growth when it is two-thirds to nearly fully extended and before it hardens off." (Robert G. Platt, "Micronutrient Deficiencies of Citrus," University of California Agricultural Experiment Station Extension Service, June, 1968.) Obviously, few home growers need 100 gallons of spray, but just follow the proportions of the UC Extension Service Bulletin, and you can easily spray your tree with a hand pump Hudson sprayer. ZnSO_4 and MnSO_4 are available together as a mix from farm supply stores, and home and garden centers sell foliar spray fertilizers that supply Zn and Mn.

In my next article, I will have more to say about *Citrus*, irrigation and salts. If you are interested in reading more about fertilizing citrus, here are two links to much more detailed articles:

<http://ucce.ucdavis.edu/files/datastore/391-571.pdf>

<http://homeorchard.ucdavis.edu/files/140618.pdf>

Fertilizers are labeled with three numbers (N-P-K) that refer to the percent of nitrogen (N), phosphorus (P) and potassium (K). For example, a designation of 14-14-14 means the fertilizer is 14% nitrogen, 14% phosphorus and 14% potassium.



Saturday, January 19, 2013

9:00 a.m.

**Tree Planting
Dr. Lewis Garden
Jane and Victoria**



Saturday, February 16 2013

9:00 a.m.

**Planting roses
Lorraine Small Garden
Myrtle and Victoria**



P. O. Box 4152
Riverside, CA 92514
(951) 398-1032

Return Service Requested

Non-Profit Org.
U.S. Postage Paid
Riverside, CA
Permit # 193



Find us online

Work Days
January 19 & February 16
See page 5 for details

Victoria Avenue is special! Please support our efforts.

Start your membership in prestigious Victoria Avenue Forever today! Complete this page to begin receiving your quarterly newsletter, *Avenews*, and exciting information about this Nationally Registered Historic Place (Riverside Landmark No. 8.) See victoriaavenue.org for more information.

- Yes! I want to help make Victoria Avenue the most magnificent linear arboretum in the world!**
- Send me information on the fascinating history of Victoria Avenue and a copy of *Avenews* (**FREE!**) *We send historical information via email at no cost - and saves your contribution for trees and shrubs! Please supply your email address below.*
- I want to volunteer my services: Planting Trees Office Delivering Brochures as a Master Gardener Other _____
- I want to become a member and start receiving *Avenews* via: U.S. Mail *or* Email
 Individual (\$20) Family (\$35) Sustaining (\$75) Other \$ _____ ***All contributions to VAF are 100% tax-deductible.***
- I want to make a contribution as a honorarium *or* memorial to: _____
with an acknowledgement to: (Name): _____
(Address): _____
- I want to make a \$100 per tree contribution as a Tree Commemoration
 In memory of: _____ *Please make sure we have your phone number below. Someone will contact you.*

Please make your check payable to: Victoria Avenue Forever. Mail to PO Box 4152, Riverside, CA 92514 Thank You!

Name: _____ Email: _____
 Address: _____ Phone: _____ Mobile Home Work
 City/State/Zip: _____ Spouse/Partner: _____

Please print your contact information, including email address and phone number.

Victoria Avenue Forever is a public benefit nonprofit 501(c)(3) corporation dedicated to the preservation and beautification of Victoria Avenue. Tax ID: 33-0571694. **All contributions are 100% tax-deductible.**